

Maps – Status of Land Ownership in the Greater Yellowstone Area

The maps on the following five pages provide a context of land ownership in the Greater Yellowstone Area.

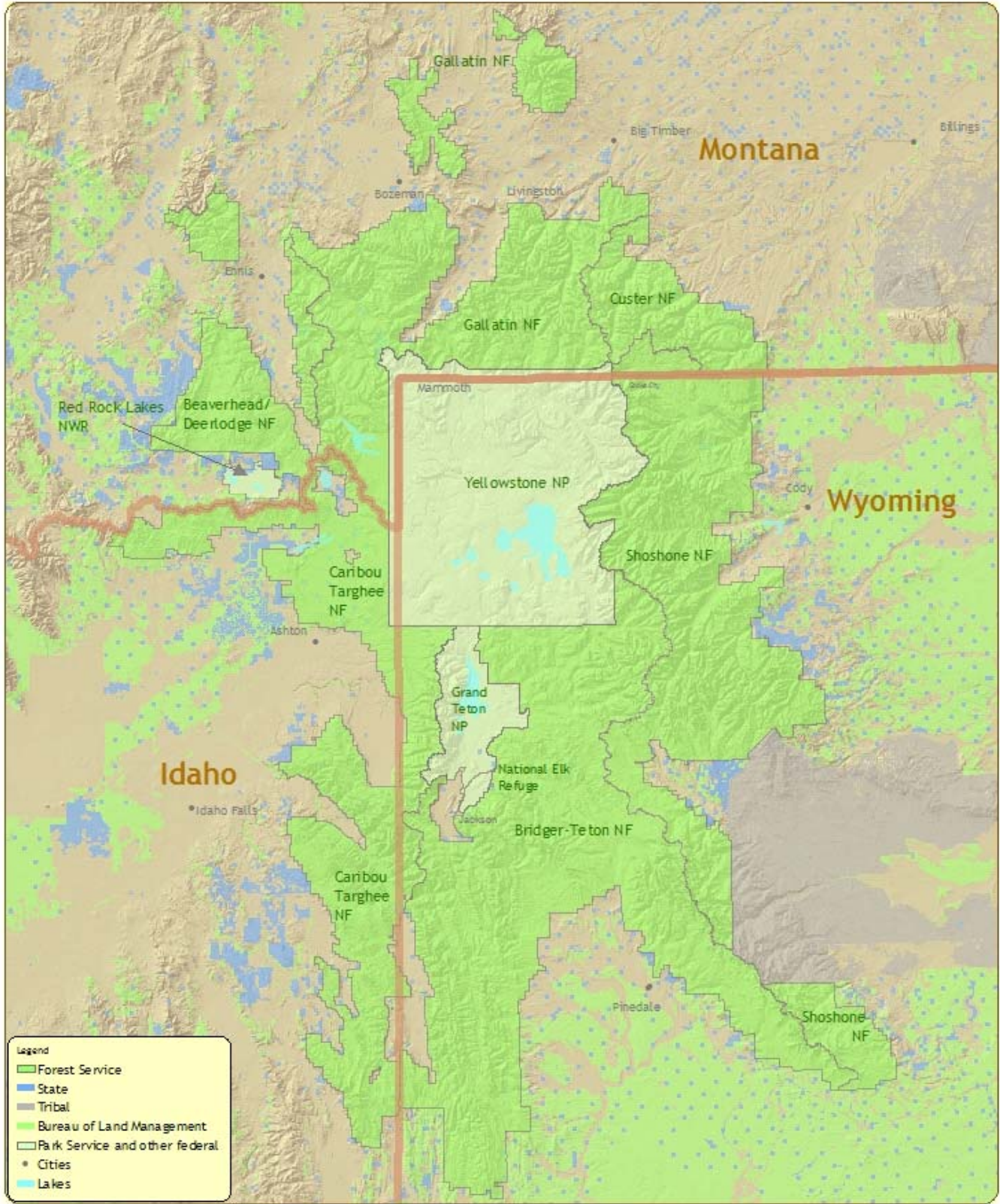
Map 1 displays public and tribal land, and Map 2 provides similar information with the private inholdings among the National Forests displayed.

Map 3 adds existing easements and preserves to the information in Map 1.

Map 4 shows the high value lands for voluntary conservation developed by the Heart of the Rockies Initiative, based on resource significance, agricultural lands and community value. This map is included to display one organization's analysis and does not constitute an endorsement of priorities by the GYCC federal agencies.

Finally, Map 5 portrays the status of the parcels the federal agencies have identified for willing seller land acquisition since 2000.

Protecting Greater Yellowstone Landscape Integrity Public and Tribal Lands

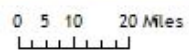


Legend

- Forest Service
- State
- Tribal
- Bureau of Land Management
- Park Service and other federal
- Cities
- Lakes



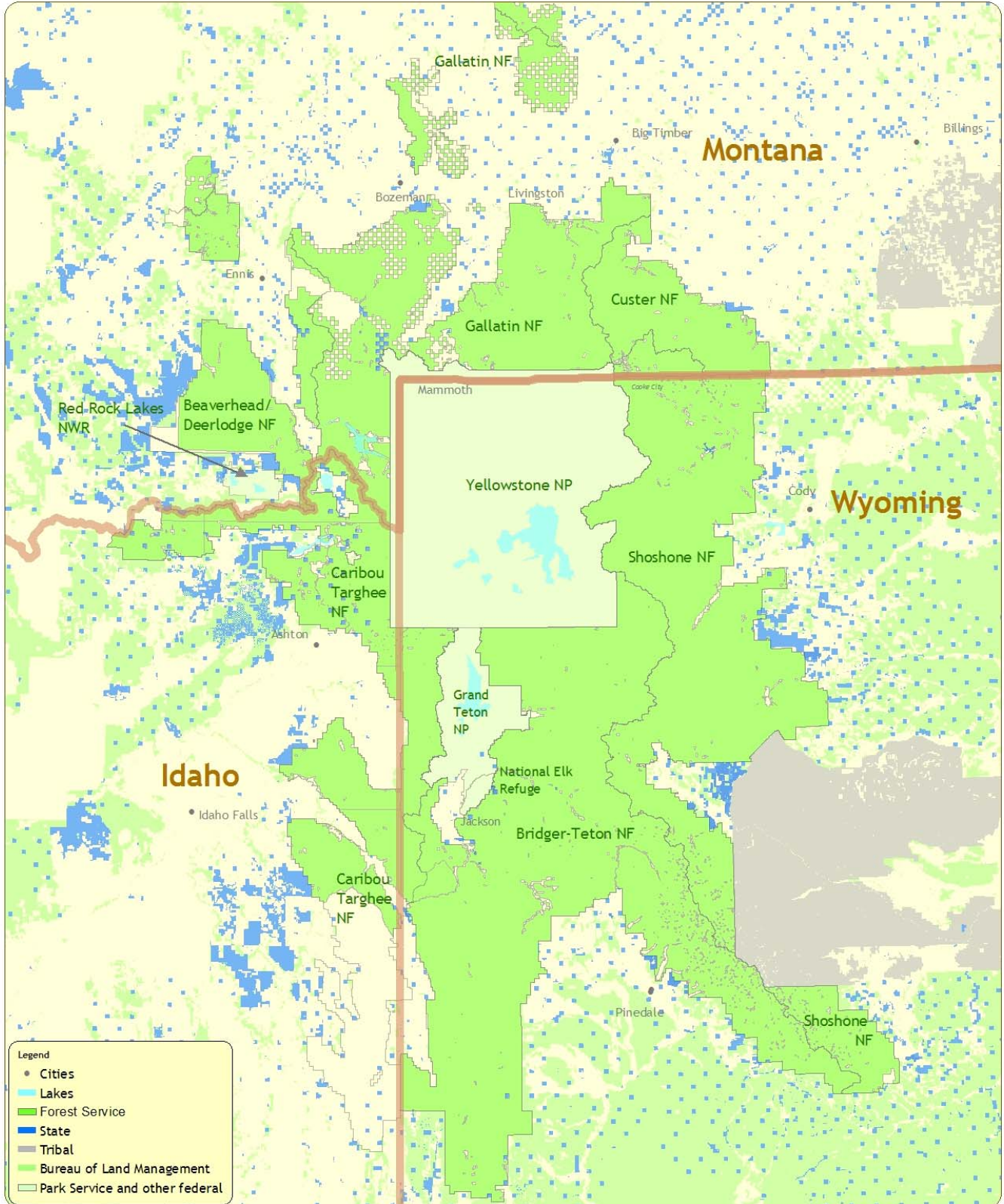
Printing Date: Wednesday, April 02, 2008 12:59 PM
 Prepared By: Henry F. Shovic
 USDA Forest Service, Gallatin National Forest
 Coordinate System:
 NAD 1983 UTM Zone 12N
 Operating System: Microsoft Windows XP Professional
 ArcMap Build Number: 9.2.1324
 File: I:\fs\files\fs\temp\iso\resource\gallatin\integrated\RestorationStrategy\Maps\gys\CriticalLandsAnalysisPublicTribalOnly\040208_vs11_85x11.mxd



This map was made from spatial data provided by the Greater Yellowstone Coordinating Committee and the Nature Conservancy



Protecting Greater Yellowstone Landscape Integrity Public and Tribal Lands



Legend

- Cities
- Lakes
- Forest Service
- State
- Tribal
- Bureau of Land Management
- Park Service and other federal



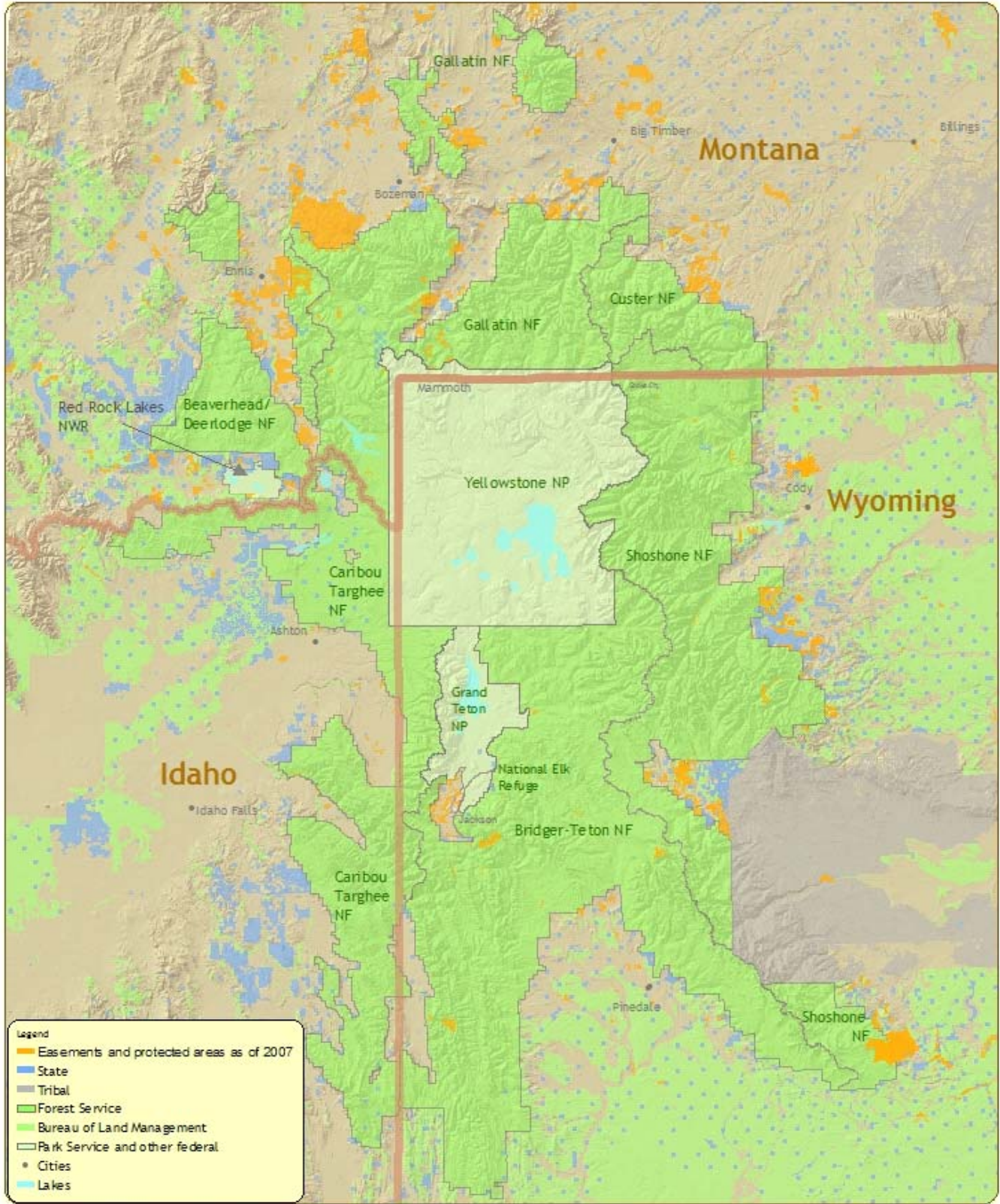
Printing Date: Monday, June 23, 2008 1:04 PM
 Prepared By: Henry F. Shovic
 USDA Forest Service, Gallatin National Forest
 Coordinate System:
 NAD 1927 UTM Zone 12N
 Operating System: Microsoft Windows XP Professional
 ArcMap Build Number: 9.2.1324
 File: I:\files\fstmp\so\resource\gyag\cm\maps\GYA2002AndOnward\ARCGIS\MapsAndMapImagesAndPDFs\gyaCriticalLandsAnalysisPublicTribalOnly062308_vs11_85x11.mxd

0 4.5 9 18 Miles

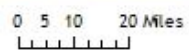
This map was made from spatial data provided by the Greater Yellowstone Coordinating Committee and the Nature Conservancy



Protecting Greater Yellowstone Landscape Integrity Public/Tribal Lands and Easements/Preserves



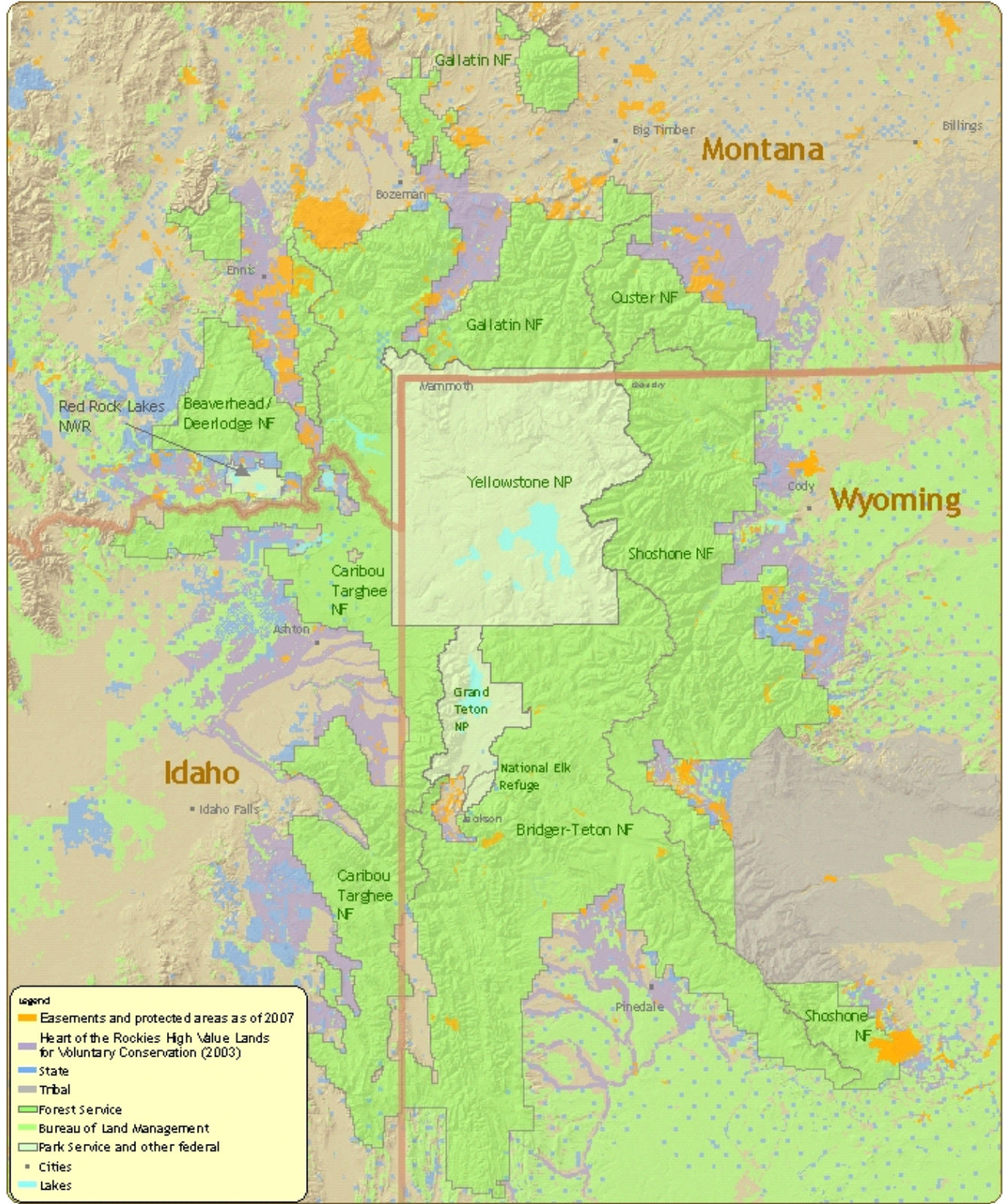
Printing Date: Wednesday, April 02, 2008 2:20 PM
 Prepared By: Henry F. Shovic
 USDA Forest Service, Gallatin National Forest
 Coordinate System:
 NAD 1983 UTM Zone 12N
 Operating System: Microsoft Windows XP Professional
 ArcMap Build Number: 9.2.1324
 File: I:\fs\files\fs\temp\ao\resource\gyeg\comaps\GYA2004And0rwa\rd\GYA2004\gya\Cr\to\all\and\analysis\PublicTribalEasements040208_v11_85x11.mxd



This map was made from spatial data provided by the Greater Yellowstone Coordinating Committee and the Nature Conservancy



Protecting Greater Yellowstone Landscape Integrity Public/Tribal Lands, "High Value Conservation" Lands, and Easements/Preserves

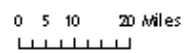


Legend

- Easements and protected areas as of 2007
- Heart of the Rockies High Value Lands for Voluntary Conservation (2003)
- State
- Tribal
- Forest Service
- Bureau of Land Management
- Park Service and other federal
- Cities
- Lakes



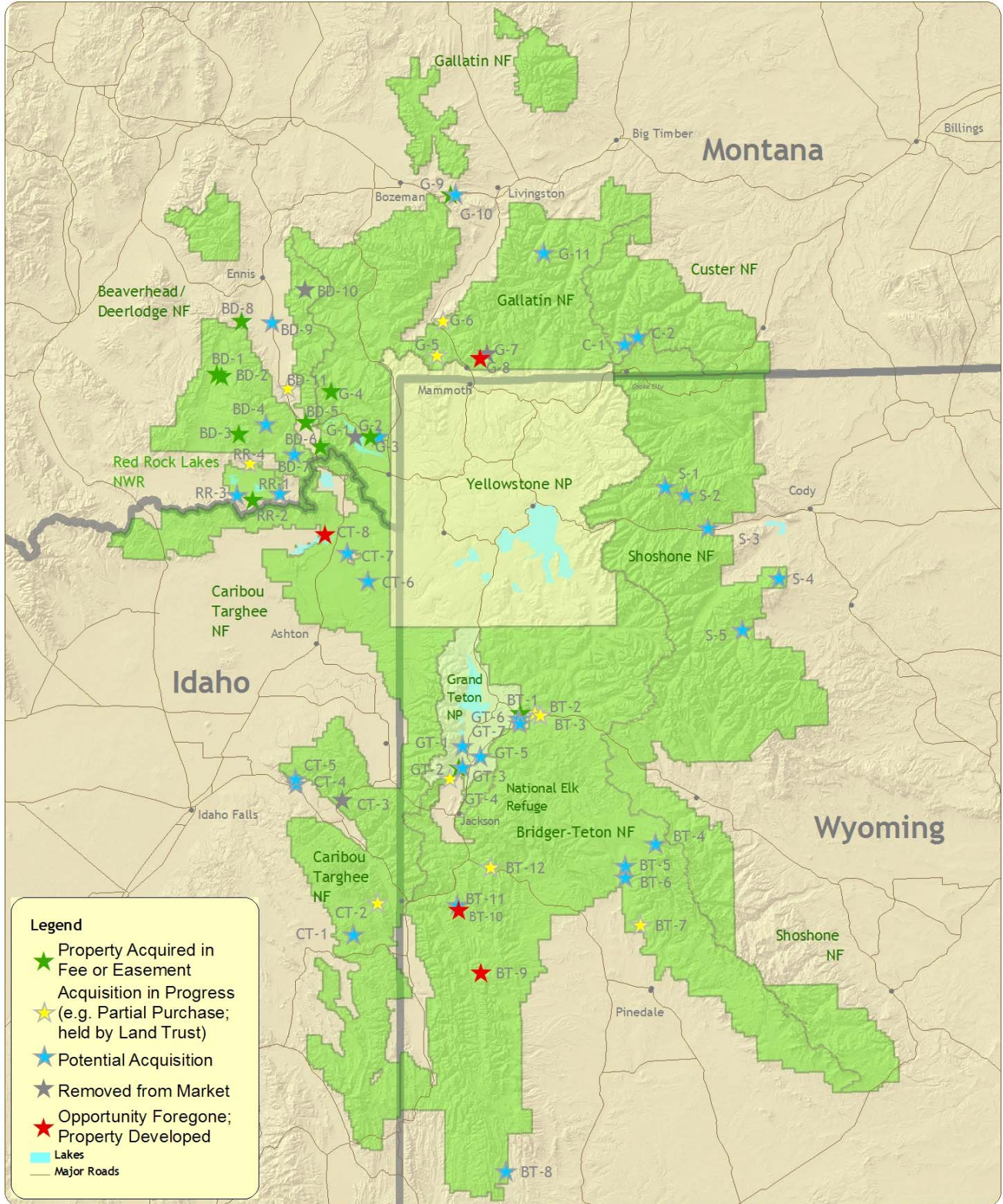
Printing Date: Wednesday, April 02, 2008 2:45 PM
 Prepared By: Henry F. Shovio
 US DA Forest Service, Gallatin National Forest
 Coordinate System:
 NAD 1983 UTM Zone 12N
 Operating System: Microsoft Windows XP Professional
 Application Build Number: 9.2.1324
 File: I:\stiles\stiles\resource\gys\gys\oam\p\GYA2004\And0\new\GYA2004\gys\Critical_Lands_Analysis\All\syens040208_vs11_8 5x11.mxd



This map was made from spatial data provided by the Greater Yellowstone Coordinating Committee, the Nature Conservancy, and the Heart of the Rockies Initiative.



Greater Yellowstone Land Acquisition Nominations: Status for 2000-2007

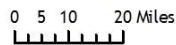


Legend

- ★ Property Acquired in Fee or Easement
- ★ Acquisition in Progress (e.g. Partial Purchase; held by Land Trust)
- ★ Potential Acquisition
- ★ Removed from Market
- ★ Opportunity Foregone; Property Developed
- Lakes
- Major Roads



Printing Date: 10/15/2007 10:04 AM
 File: gyagycacquisitions2007_092807_vs12_85x11.mxd
 Prepared By: Henry Shovic, Gallatin Forest
 Coordinate System:
 NAD 1927 UTM Zone 12N



This map was made from spatial data provided by the Greater Yellowstone Coordinating Committee.

